

## PRONTOKORQ FLOOR / WALL PANEL

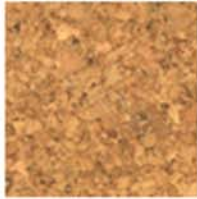
CLICK SYSTEM TONGUE & GROOVE

INSTALLED AS A FLOATING FLOOR SYSTEM (NO ADHESIVE)

SIZE: 36" X 12" X 3/8" THICK

FINISH: PRE-VARNISHED

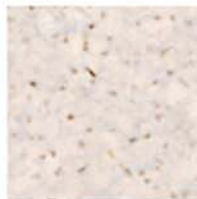
**SARDEGNA  
NATURAL**



**SARDEGNA  
BEIGE**



**SARDEGNA  
WHITE**



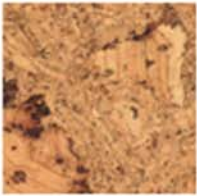
**SARDEGNA  
CREME**



**SARDEGNA  
BROWN**



**ORANI SPECIAL  
NATURAL**



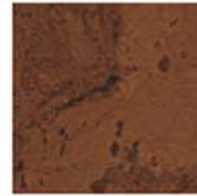
**ORANI SPECIAL  
WHITE**



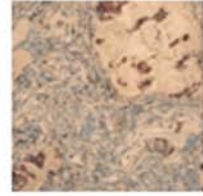
**ORANI SPECIAL  
CREME**



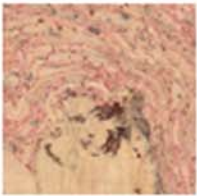
**ORANI SPECIAL  
BROWN**



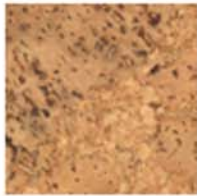
**ORANI SPECIAL  
BLUE**



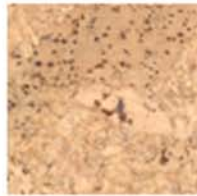
**ORANI SPECIAL  
ROSE**



**ORANI NATURAL**



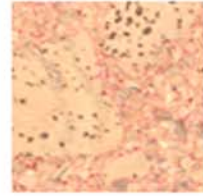
**ORANI CREME**



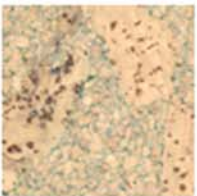
**ORANI BLUE**



**ORANI ROSE**



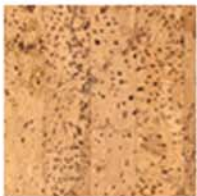
**ORANI MINT**



**TAVOLARA**



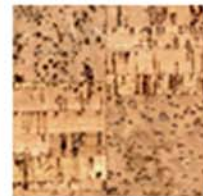
**GINEPRO**



**MINDRE**



**MOLARA**



**MARMORATA  
NATURAL**



**MARMORATA  
CREME**



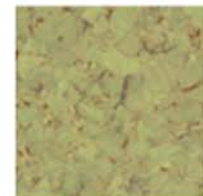
**MARMORATA  
BLUE**



**MARMORATA  
GRAY**



**MARMORATA  
MINT**



# HABITUS

Habitus Inc. 166 East 108th Street New York NY 10029 Tel: 212.426.5500 / Fax: 212.426.5200

## PRONTOKORQ FLOOR / WALL PANEL

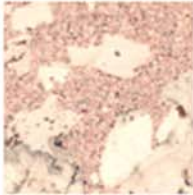
CLICK SYSTEM TONGUE & GROOVE

INSTALLED AS A FLOATING FLOOR SYSTEM (NO ADHESIVE)

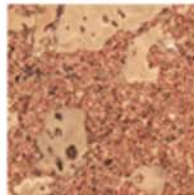
SIZE: 36" X 12" X 3/8" THICK

FINISH: PRE-VARNISHED

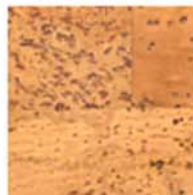
**CHUNK STYLE  
PINK**



**CHUNK STYLE  
ROSE**



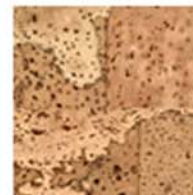
**CAPRICCIOLI  
NATURAL**



**CAPRICCIOLI  
BROWN**



**CAPRICCIOLI SPECIAL  
NATURAL**



STYLES & COLORS, PAGES 2 OF 2

FEATURE PROJECT: ITALIAN LANGUAGE SCHOOL NYC  
PRONTOKORQ PANEL; CAPRICCIOLI BROWN

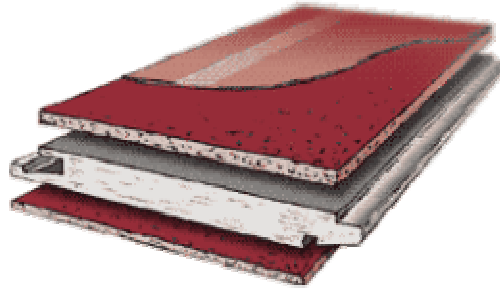


# Habitus Architectural Finishes

## Installation and Maintenance of Pre-Varnished ProntoKorQ Glueless Click System, Tongue & Groove

### Recommendations

- Cork is a natural product. Differences in the structure and shades of the planks occur naturally and cannot be accepted as valid grounds for complaints.
- The cork planks should be climatized by opening the boxes and leaving in the middle of the room in which they are to be laid for 48 hours
- Upon opening the boxes, check that all planks are in the proper condition for installation
- Do not install cork floors in humid room spaces such as bathrooms, saunas and laundry rooms
- Always leave a gap of approximately 3/8" between the edges of the flooring and perimeter walls to allow for possible expansion and movement
- If the room in which the panels are to be installed has under floor heating, the surface must not exceed a temperature of 82 degrees. Under floor heating can lead to the formation of cracks in the cork during long heating periods



### Surface Preparation:

- Should the floor surface require leveling, use a quick drying leveling plaster.
- Cement or cement-derivative floors should be made impermeable with 0.2mm thick polyethylene film in order to protect the panels from sub-floor moisture.
- Cork panels may be laid directly on top of PVC, linoleum, agglomerates or carpets.
- After laying on the polyethylene film, we recommend the use of a cork under layer, available in rolls and with a minimum thickness of 2mm in order to improve the sound insulation. When fitting the under layer, take care that the joins do not coincide with the joins of the polyethylene film.
- The laying of the prefabricated cork panels is so easy that one almost regrets when the job is finished!
- You will also need a hammer, set square, saw, carpenter's gauge, wooden wedges and a wooden batten, plus a chisel.

### Installation

- Plan the installation before beginning to lay the panels; measure the room/space in which the panels are to be installed. Normally the last row of panels has to be cut longitudinally to adjust the panels to remaining space. If the last row turns out to be very narrow, the first row should also be cut to match the dimensions of the panels in the last row.
- Leave a space of approximately 3/8" (expansion space) between the panels and perimeter walls or around obstacles (columns and pillars) Use wooden wedges.
- If a wall is not straight use a ruler. The first three rows should be laid using a ruler.
- Begin fitting the panels from left to right, so that the "male" ridges of the first panel faces the wall. Do not forget to place wedges between the wall and the panels.
- Now insert the "male" ridge of the next panels into the "female" groove in the first panel at a slight angle and press lightly on the "females" side (Fig. 4) Now close the join between the transversal edges and grooves using a suitable piece of wood and mallet
- To make the join for the last panel in the row use a push bar. Do not forget to insert the wedge between the panel and the wall on the left-side
- Begin the ensuing rows with the rest of the last panel of the previous row (length of at least 11.8").

First fit the panel lengthwise and then make the join by hammering gently with a mallet and wood on the female side. Then make the join on the transversal sides, once again using the mallet.

- The last row is attached to the preceding row with the aid of the pull bar. Do not forget to leave an expansion space of approximately 3/8".
- If you use a ruler, remove it after laying 3 or 4 rows and pull the panels together in the direction of the wall.
- Remove the wooden wedges and attach quarter round, which should completely cover the space left for the expansion of the panels
- Once the panels have been installed, it is possible to walk on the floor covering immediately. This is one of the advantages of the speedy system.

**Maintenance and Cleaning:**

- Clean regularly with a vacuum cleaner or with a mop or damp cloth. If necessary, use mild detergent.
- Never use water directly on the cork floor covering.
- Protect floor covering from chairs and other pieces of furniture by using felt on the feet.